


**Legend**

- Barrier
- Lane Closure Truck
- Sign
- Traffic Control Device (i.e. cones, delineators, barrels, etc.)
- Traffic Control Person
- Work Area

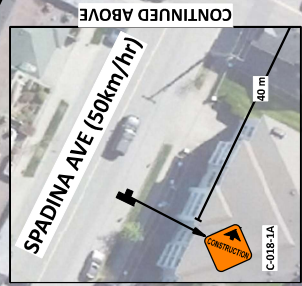
**Date:** 2023-07-13 **Author:** Jacob Jelasco **Project:** 2021-09-2021 Asphalt Rehabilitation  
**Revision:** 0 **Location:** Spadina Ave at First Ave

**Comments:**

- Traffic control setups to conform with latest version of Ministry of Transportation and Infrastructure Traffic Management Manual for Work on Roadways.
- All traffic control personnel to be positioned on shoulder or curbside adjacent to the traffic being controlled as per WorkSafeBC OHS Act Section 18.8(2)(i)(ii) and 18.8(2)(c)(i).
- Hours of work: Mon-Fri, 07:00-17:00.
- BC Transit to be notified of transit impacts via email submission of request form three business days in advance.




CONTINUED ON INSET BELOW



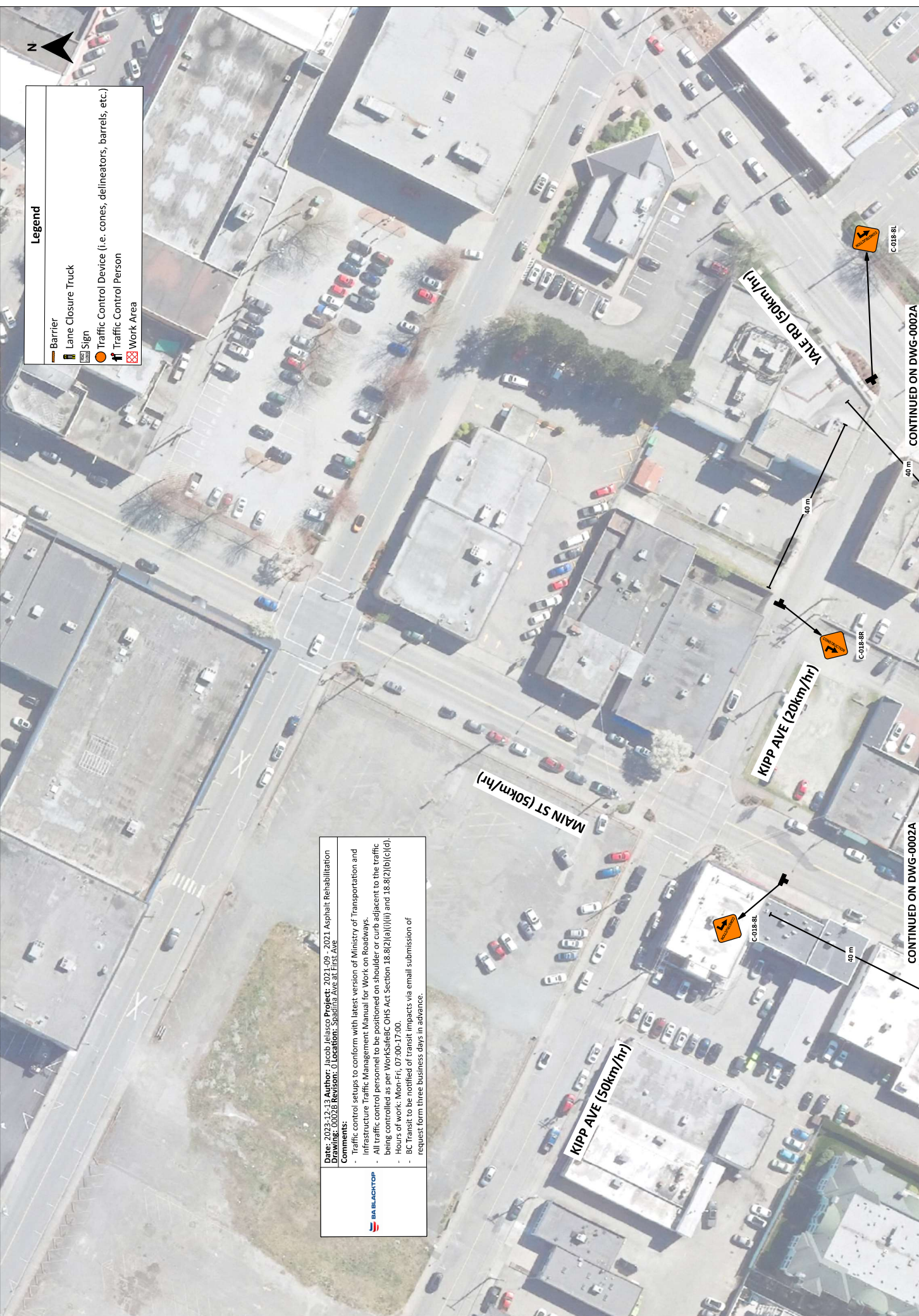
CONTINUED ABOVE

CONTINUED ON DWG-0002B

CONTINUED ON DWG-0002B

CONTINUED ON INSET BELOW





**Legend**

	Barrier
	Lane Closure Truck
	Sign
	Traffic Control Device (i.e. cones, delineators, barrels, etc.)
	Traffic Control Person
	Work Area

**Date:** 2023-12-13 **Author:** Jacob Ielasco **Project:** 2021-09 - 2021 Asphalt Rehabilitation  
**Drawing:** 0002A **Revision:** 0 **Location:** Spadina Ave at First Ave

**Comments:**

- Traffic control setups to conform with latest version of Ministry of Transportation and Infrastructure Traffic Management Manual for Work on Roadways.
- All traffic control personnel to be positioned on shoulder or curb adjacent to the traffic being controlled as per WorkSafeBC OHS Act Section 18.8(2)(a)(i)(ii) and 18.8(2)(b)(c)(d).
- Hours of work: Mon-Fri, 07:00-17:00
- BC Transit to be notified of transit impacts via email submission of request form three business days in advance.



CONTINUED ON DWG-0002A

CONTINUED ON DWG-0002A